

LCUSA Candidates Running for Election

Term: January 2025 - December 2026

BOARD OFFICERS



Mary Nell Williams
President-Elect



Winona Nelson
Secretary



Donna Montague
Treasurer

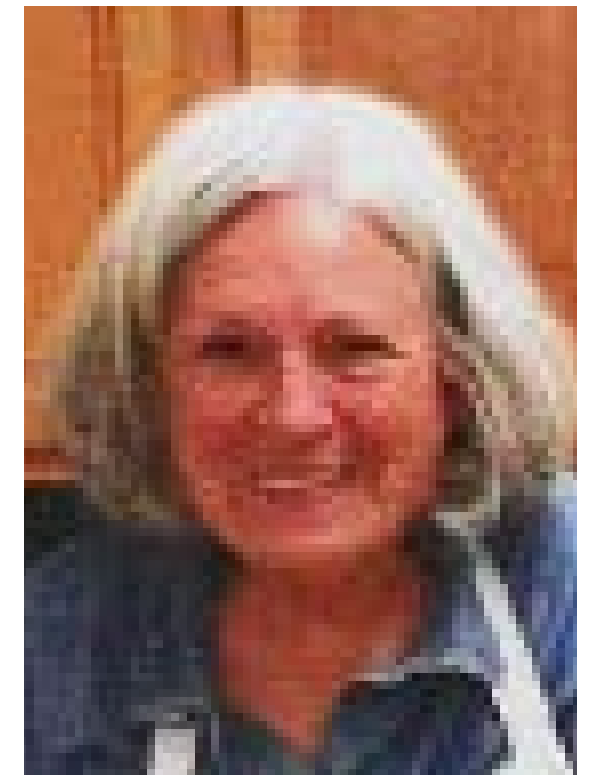
Directors for North-Central Region



Mary Pat Sullivan



MaryLee Burlemann

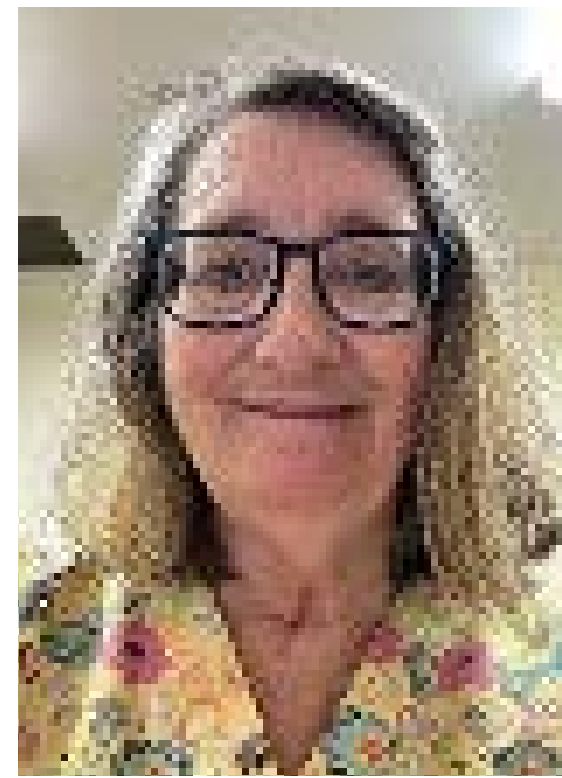


Sharon Terwelp

Directors for Mid-Atlantic Region



Viola Johnson-Robinson

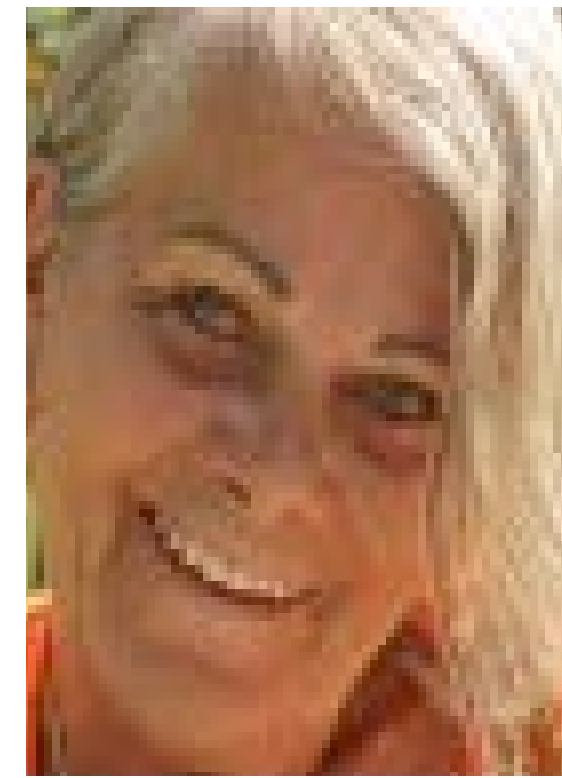


Deborah Self



Nancy Bianculli

Directors for Southern Region



Annelies Geelen



Marlyss Giles



Paulina Velez

Directors for Northeastern Region



Natalie Boone



Frances Simkulet



Kathleen Roseti

Directors for Western Region



Hilda Ruiz

BOARD OFFICERS ELECTED PREVIOUSLY



Irene Siedlarczyk
President



Holly Walter
Past President